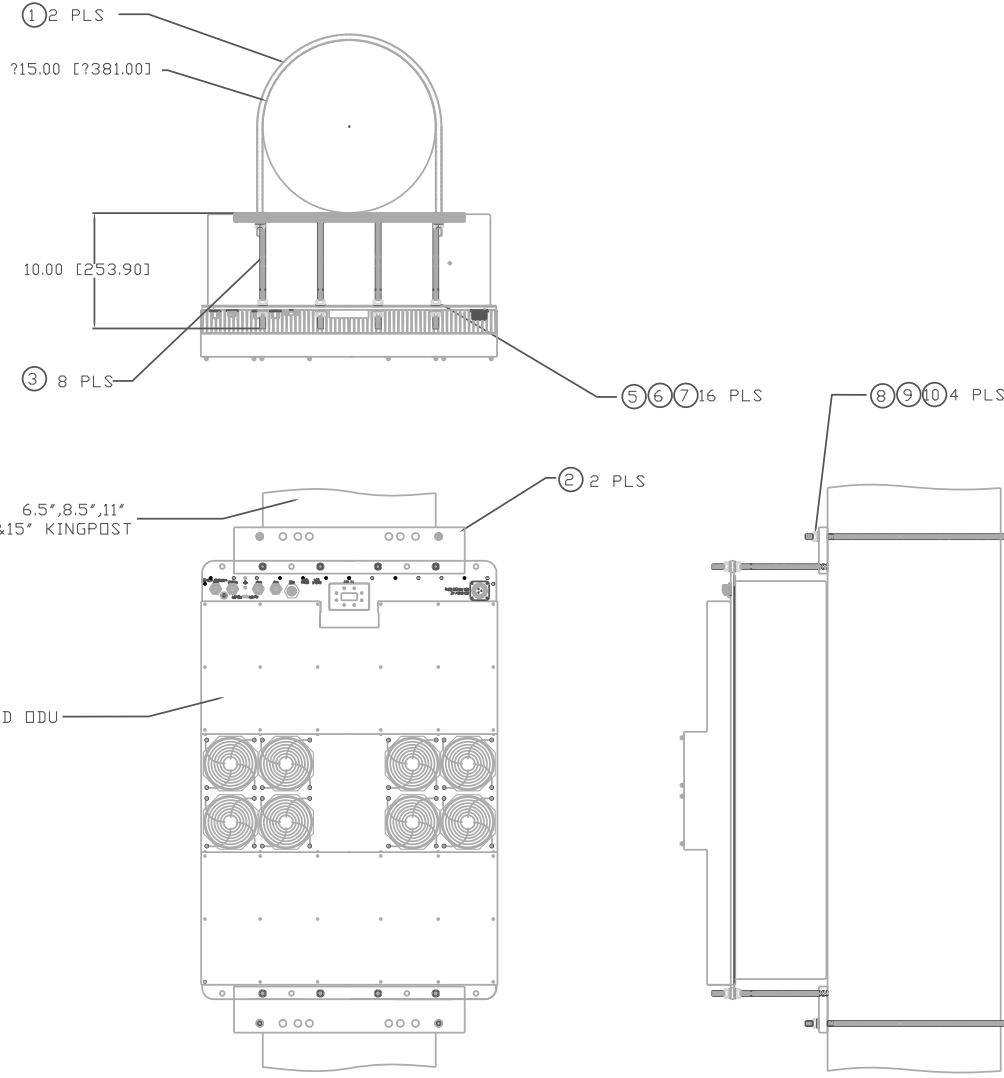
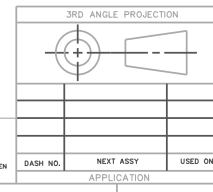


REV	BY	DESCRIPTION	DATE	APPROVED
01	ZHU	PROTOTYPE RELEASE	07/14/11	



400W ODU Kingpost Mounting Kit Parts List
BOM #12096-UBOLT

ITEM NO.	ZONE	MATERIAL/SPECIFICATION	QUANTITY	UNIT
10		STAINLESS STEEL WASHER SPLIT, M14 SS	11833151	4
9		STAINLESS STEEL WASHER FLAT, M14 SS	11833150	4
8		STAINLESS STEEL NUT, M14 SS	11832350	4
7		STAINLESS STEEL WASHER SPLIT, M12 SS	11833002	40
6		STAINLESS STEEL WASHER FLAT, M12 SS	11833102	40
5		STAINLESS STEEL NUT, M12 SS	11832302	40
4				
3		STAINLESS STEEL THREADED M12x260mm ROD,SS	33532	8
2		ALUMINUM FAB, LONG BAR	33535	2
1		STAINLESS STEEL FAB, U BOLT, THREADED ROD M14x380mm, SS	33534	2



PROPRIETARY INFORMATION
THE INFORMATION CONTAINED HEREIN IS TO BE USED FOR BIDDING/MANUFACTURING PURPOSES TO THE RECIPIENT ONLY. IT SHALL NOT BE DISCLOSED OR DIVULGED TO ANY THIRD PARTY WITHOUT THE PRIOR WRITTEN CONSENT OF ANALOG ENGINEERING, INC.

MATERIAL:		SPECIFICATIONS:		LIST OF MATERIAL OR PARTS LISTS	
1		ALL DIMENSIONS ARE IN INCHES. DIMENSIONS IN [XXX] ARE IN MILLIMETERS.		<p>Anacom, Inc.</p> <p>ASSY DWG, KINGPOST MOUNT KIT 400W SINGLE ODU</p> <p>DRAWING NUMBER: 33536 REV: 01</p>	
FINISH:		TOLERANCES:	ANGLES: ± 1°		
2		.X : ± .06 [X:±.15]			
		.XX : ± .020 [XX:±.05]			
DO NOT SCALE		ALL SURFACES 63 EXCEPT AS NOTED		SIZE: D	CLASS CODE: NONE
DASH NO.		DRAWN: ZHU	DATE: 07/14/11	FILE No.:	33536011
NEXT ASSY		CHECKED: ZHU	DATE: 07/14/11	SHEET:	1 OF 1
USED ON		DATE:			
APPLICATION		DATE:			