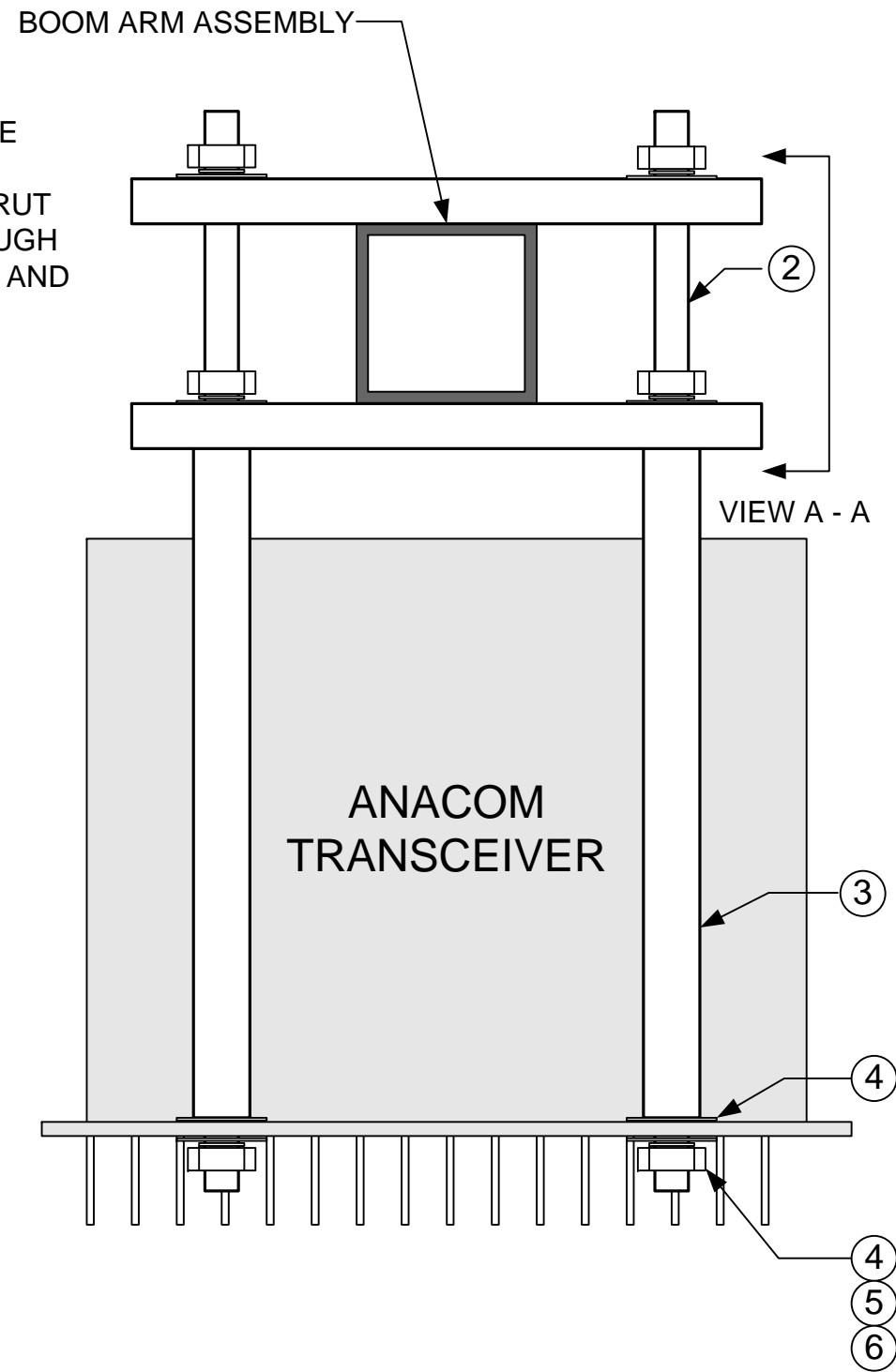
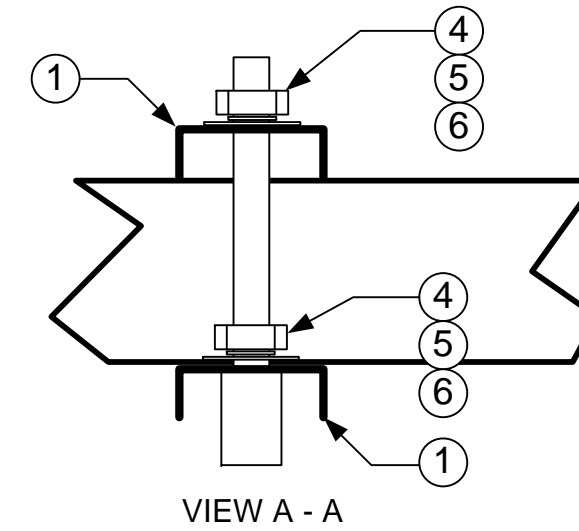


NOTE: THIS MOUNTING KIT IS COMPATIBLE WITH ALL ANASAT TRANSCEIVERS. USER MUST MAKE SURE THE BOOM ARM OR STRUT USED TO HOLD THE ODU IS STRONG ENOUGH TO SUPPORT THE TOTAL WEIGHT OF ODU AND CABLES.



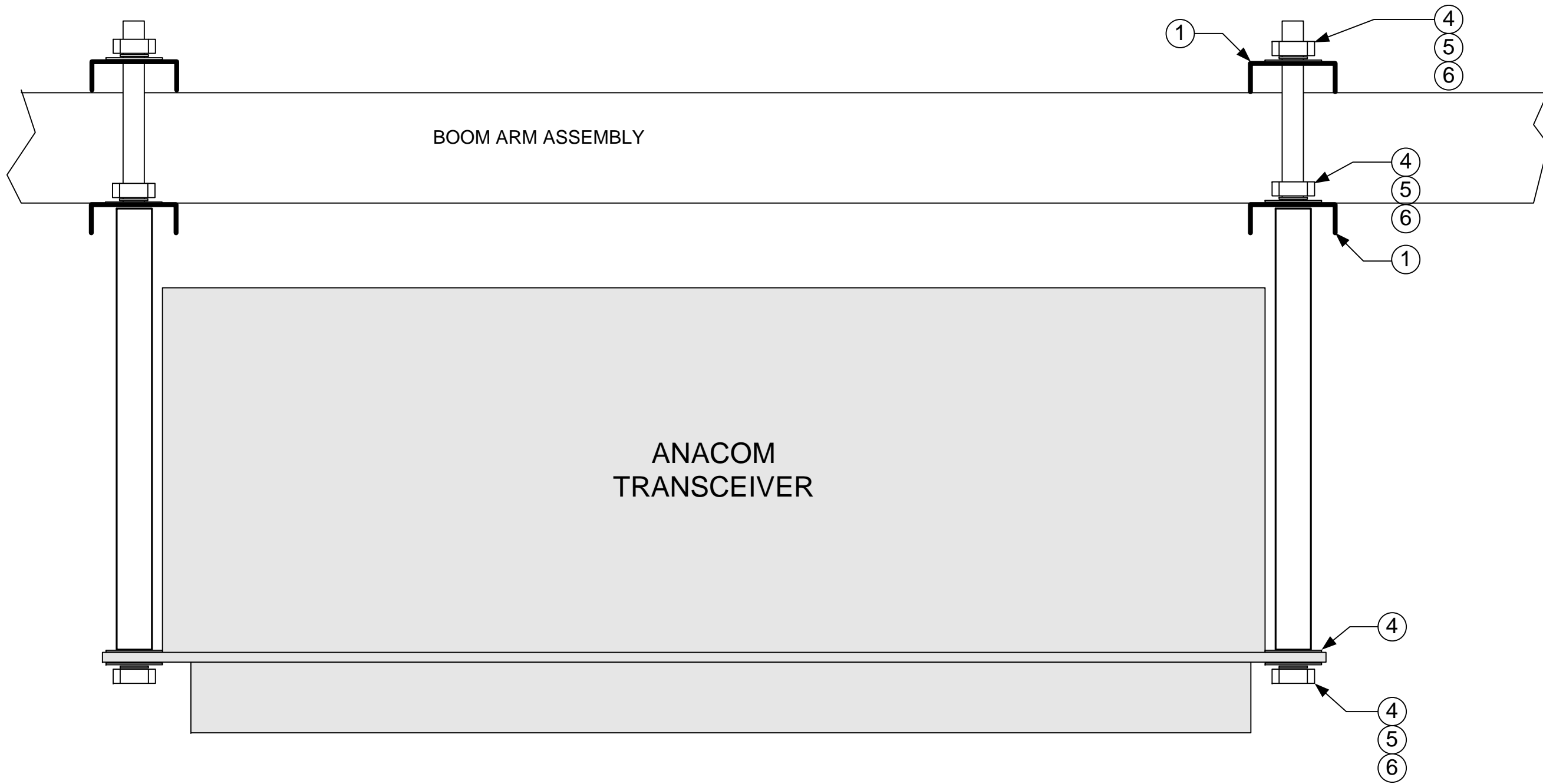
NOTE: UPPER CHANNEL CAN BE INVERTED TO ACCOMADATE LARGER BOOM SIZE IF NEEDED



Single Universal Mounting Kit Parts List \_ 12104

ITEM	Description	QTY
1	Channel	4
2	Threaded 3/8 rod, SS, 12in long	4
3	Tube, 7in x 0.7in dia, steel	4
4	Washer, flat, 3/8 SS	16
5	Washer, split, 3/8 SS	12
6	Nut, 3/8 SS	12

<b>ANACOM INC.</b>		
3000 Tasman Drive, Santa Clara, CA 95054		
Title <b>ASSEMBLY DRAWING, SINGLE MOUNTING KIT</b>		
Size <b>B</b>	Document Number <b>31626</b>	Rev <b>2</b>
Date: <b>22 APR 2005</b>	Sheet <b>1</b> of <b>1</b>	



<b>ANACOM INC.</b>		
3000 Tasman Drive, Santa Clara, CA 95043		
Title <b>ASSEMBLY DRAWING, SINGLE MOUNTING KIT</b>		
Size <b>B</b>	Document Number <b>31626</b>	Rev <b>2</b>
Date: <b>22 APR 2005</b>	Sheet <b>2</b> of <b>2</b>	