

AnaCom's series of XKu-band ELSAT[®] Block-Upconverters (BUC) are available in transmitter output levels up to 100 Watts, in single or redundant configurations. These BUCs are ruggedly built for continuous outdoor duty in all types of environments. They are especially suitable for SCPC, MCPC, and DAMA applications.

The upconverter, power amplifier, monitor and control and power supply are included in a single enclosure and the only cabling required to the indoor equipment are IF cables. An ovenized, high stability crystal oscillator is used to lock the TX synthesizer. Additional temperature and aging compensation are provided by an onboard microprocessor.

Features

- ✓ Built in test facilities for improved maintainability and reduced dependence on external test equipment
- ✓ No indoor equipment is needed
- ✓ Frequency agile radio equipment
- ✓ Superior phase noise
- ✓ Flexible, universal power supply

Built In Test Equipment

To improve and simplify maintenance routines, an external terminal (or computer) can be connected to monitor a number of critical parameters without use of additional test equipment. These include:

- ✓ Transmitter power output level
- ✓ TX IF level
- ✓ Power supply voltages
- ✓ TX synthesizer loop voltages
- ✓ Internal Temperature
- ✓ Alarm Details

Controllable functions from the terminal include:

- ✓ TX frequency and gain (*ON/OFF feature*)

Benefits

- ✓ "Last Touch" controls allow for remote configuration or local (*manual*) configuration
- ✓ Flash memory means that the BUC always powers up with exactly the same operating conditions as when it last powered (or was turned off)
- ✓ Comprehensive maintenance features for operational effectiveness and minimum outages.
- ✓ Simple installation.

Comprehensive Monitor & Control

The ELSAT[®] BUC's Monitor & Control feature allows you to monitor and control the BUC on the same M&C bus with most indoor equipment such as modems and multiplexers. The Monitor & Control system can be used in combination with the unit's internal metering function to monitor operational parameters.

The M&C can be accessed remotely via-

Ethernet protocols:

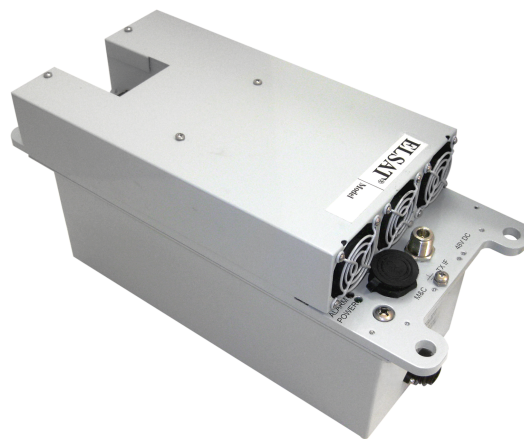
- ✓ Internal Webpage
- ✓ Telnet
- ✓ SNMP
- ✓ AnaCom Supervisor 10

Serial protocols:

- ✓ RS-232
- ✓ RS-485
- ✓ AnaCom Supervisor 10

Compact, Functional Design

The upconverter, power amplifier, monitor and control and power supply are included in a single enclosure. The only cabling required to the indoor equipment are IF and power. An optional ovenized, high stability crystal oscillator can be used to lock the TX synthesizer. Additional temperature and aging compensation are provided by an onboard microprocessor.



ELSAT® BUC**XKu-Band Series****SPECIFICATIONS****TRANSMIT CHARACTERISTICS**

ELSAT® BUC XKu-Band Series		SPECIFICATIONS														
		1mW	2W	4W	8W	16W	20W	25W	30W	40W	50W	80W	100W	125W	150W	200W
TRANSMIT CHARACTERISTICS	1 dB COMPRESSION POINT (dBm)	0	33	36	39	42	43	44	44.8	46	47	49	50	51	51.8	53
	TX GAIN	25	58	61	64	67	67	69	69.8	71	72	74	75	77	77.8	79
	TX GAIN RANGE	20 dB variable in 1 dB steps via M&C														
	TX LEVEL FLATNESS	3 dBp-p max / 500 MHz														
	TX GAIN OVER TEMPERATURE	+/- 1.5 dB max														
	TX INPUT IF FREQUENCY	950 to 1450 MHz														
	TX INPUT IF IMPEDANCE	50 ohms (75 ohms optional)														
	TX INPUT IF LEVEL	-25 dBm for rated output with nominal gain														
	TX L.O. FREQUENCY	11.8 GHz														
	TX OUTPUT FREQUENCY	12.75 to 13.25 GHz														
	TX FREQUENCY STEP SIZE	1 MHz M&C controlled														
	TX PHASE NOISE	-60 dBc/Hz max @ 100Hz					-70 dBc/Hz max @ 1KHz					-80 dBc/Hz max @ 10KHz				
		-90 dBc/Hz max @ 100KHz					-100 dBc/Hz max @ 1MHz									
INTERMOD	-25 dBc max (2 carriers, each 6dB backoff from P1dB rating)															
SPURIOUS	-55 dBc max out of band															

REFERENCE

Requirements	Provided on TXIF line by L-band modem
FREQUENCY	10 MHz (sine-wave)
INPUT POWER	-5 to +5 dBm (at input port)
PHASE NOISE	-125 dBc/Hz max @ 100Hz -135 dBc/Hz max @ 1KHz -140 dBc/Hz max @ 10KHz
INTERNAL REFERENCE OPTION	10 ⁻⁸ over rated temperature

SYSTEM

ALARM RELAYS	FORM C for Summary Alarm; Isolated
POWER	100 to 250 VAC; 47 to 63 Hz optional 48V DC
M&C	SNMP, HTTP, Telnet Ethernet, RS-232, RS-485

ENVIRONMENTAL

TEMPERATURE	-50 to +55°C operational -50 to +75°C storage
HUMIDITY	95% at 45C
ALTITUDE	6500 meters (21,500 ft) max
RAIN	20 inches per hour
WIND	150 miles per hour
VIBRATION	1.0 g random operational, 2.5 g random survival
SHOCK	10 g operational, 40 g survival

		1mW	2W	4W	8W	16W	20W	25W	30W	40W	50W	80W	100W	125W	150W	200W
POWER & DIMENSIONS	TYPICAL POWER CONSUMPTION (VA)	20	41	51	91	189	200	256	266	372	392	1430	1600	1640	2900	3087
	PRIME POWER RECOMMENDATION	50	80	100	200	380	400	500	532	750	784	3100	3500	3600	6400	6792
	WEIGHT	48V DC	6.6 lbs. (3 kg)	10.6 lbs. (4.8 kg)			16.1 lbs. (7.3 kg)			17.5 lbs. (7.9 kg)		120 lbs. (54 kg)	129 lbs. (59 kg)			142 lbs. (64 kg)
		110/220V AC	9 lbs. (4.1 kg)	13 lbs. (5.9 kg)			18.5 lbs. (8.4 kg)			19.9 lbs. (9 kg)						
	BUC SIZE	48V DC	15.3" x 6.25" x 6.1" (389 x 159 x 155 mm)			15.3" x 6.39" x 7.9" (389 x 162 x 201 mm)			15.3" x 6.39" x 9.3" (389 x 162 x 236)		38" x 12.75" x 12.9" (965 x 324 x 229 mm)					
		110/220V AC	15.3" x 6.25" x 7.1" (389 x 159 x 180 mm)			15.3" x 6.39" x 8.9" (389 x 162 x 226 mm)			15.3" x 6.39" x 10.3" (389 x 162 x 262)							

*all specifications subject to change

06/10/19

3490108

**ANACOM, INC.**Phone: +1 408 519 2062
www.anacominc.com

Fax: +1 408 519 2063