

Operational Specifications

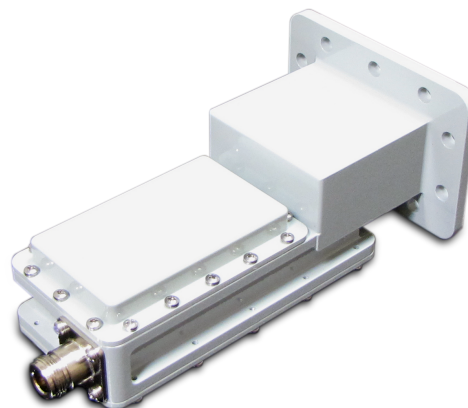
Noise temperature	< 30K	Output P1dB	+10 dBm
L.O. stability	±5 kHz to ±25 kHz	Conversion Gain	60 dB
Input VSWR	2.2 : 1	Current Drain	300 mA MAX
Output VSWR	2.2 : 1	Gain Flatness	< 2 dB
Gain Variation	6 dBp-p max	Temperature Range	-40°C to +60°C
Phase noise	-73 dBc/Hz at 1 kHz		
	-83 dBc/Hz at 10 kHz		
	-93 dBc/Hz at 100 kHz		

Frequency Specifications

Input Frequency	3.40 to 4.20 GHz
L.O. Frequency	5.15 GHz
Output Frequency	950 to 1750 MHz
Optional 10 MHz	Internal / External

Physical Specifications

Length	7.25"
Width	3.875"
Height	2.875"
Weight	1.3 lbs. / 0.6 kg
Input Waveguide Connector	CPR 229G N-type



Phase Noise

1 kHz	-73dBc/Hz
10 kHz	-83dbC/Hz
100 kHz	-93dBc/Hz

L.O. Stability

1.5 ppm	±7 kHz
2.0 ppm	±10 kHz
5.0 ppm	±25 kHz