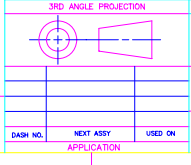


REV	BY	DESCRIPTION	DATE	APPROVED
01	ZHU	PROTOTYPE RELEASE	02/26/09	J.T.
03	ZHU	PER ECD #	1/19/10	

Redundant Kingpost Mounting Kit Parts List
BOM #12099

ITEM NO.	ZONE	MATERIAL/SPECIFICATION	QUANTITY	DESCRIPTION	UNIT
10		STAINLESS STEEL		BOLT, M12 x 2" SS	11832102 21
9		STAINLESS STEEL		WASHER SPLIT, M12 SS	11833002 21
8		STAINLESS STEEL		WASHER FLAT, M12 SS	11833102 42
7		STAINLESS STEEL		NUT, M12 SS	11832302 21
6		STAINLESS STEEL		WASHER SPLIT, M14 SS	11833151 12
5		STAINLESS STEEL		WASHER FLAT, M14 SS	11833150 14
4		STAINLESS STEEL		NUT, M14 SS	11832350 14
3		STAINLESS STEEL		FAB. U BOLT, THREADED RDD M14x11"BL, SS	33530 4
2		ALUMINUM		FAB. KINGPOST MOUNT KIT PART 2	33521 1
1		ALUMINUM		FAB. KINGPOST MOUNT KIT PART 1	33520 2



PROPRIETARY INFORMATION
THE INFORMATION CONTAINED HEREIN IS TO BE USED FOR MANUFACTURING PURPOSES TO THE EXTENT PERMITTED BY ANY THIRD PARTY THROUGH THE FLOOR WRITING CONSENT OF ANALYTIC ENGINEERING, INC.

ANACOM, Inc.

ASSY DWG, KINGPOST MOUNT KIT 400W ODU C-BAND

DATE: 02/26/09
DRAWN: ZHU
CHECKED: J.T.
DATE: 02/26/09

SCALE: NONE
FILE No. 33522031
SHEET 1 OF 1